



THE PORTSIDE - A4

ELEV. A - 1,976 SQ. FT. (INCLUDES 610 SQ. FT. LOFT)

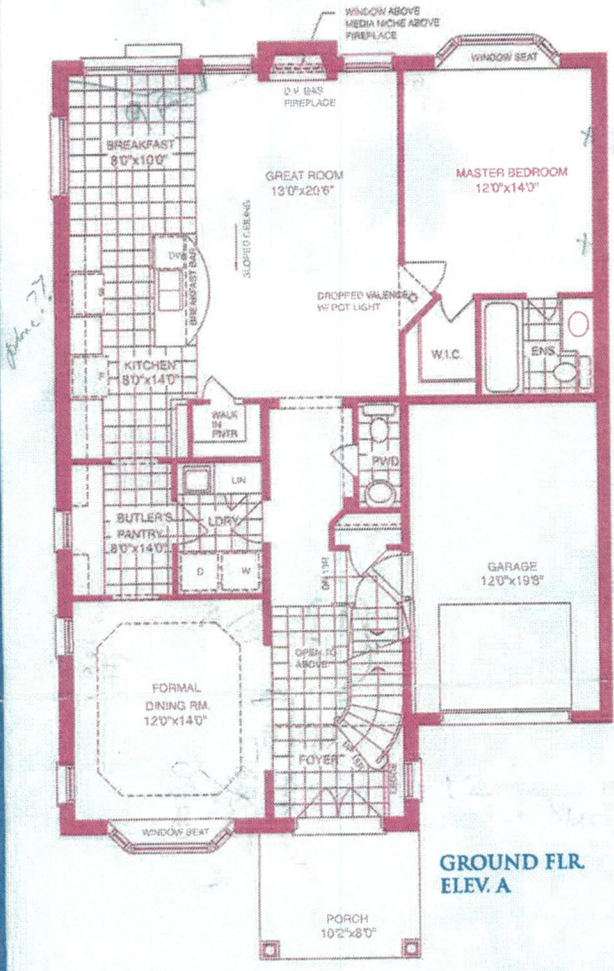
ELEV. B - 1,993 SQ. FT. (INCLUDES 625 SQ. FT. LOFT)



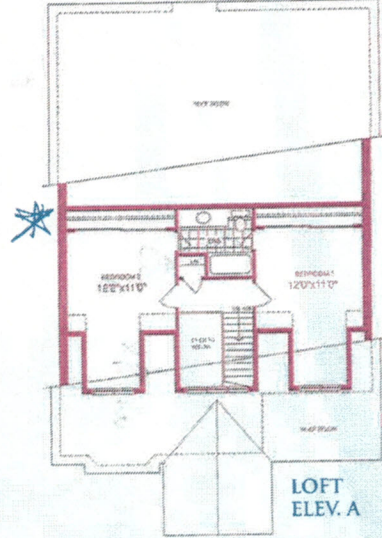
THE PORTSIDE - A4

ELEV. A - 1,976 SQ. FT. (INCLUDES 610 SQ. FT. LOFT)

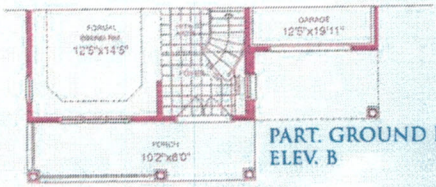
ELEV. B - 1,993 SQ. FT. (INCLUDES 625 SQ. FT. LOFT)



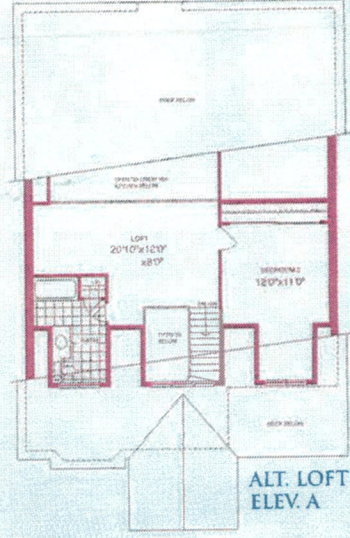
GROUND FLR. ELEV. A



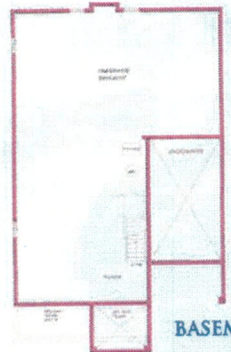
LOFT ELEV. A



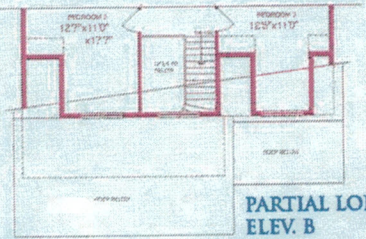
PART. GROUND FLR. ELEV. B



ALT. LOFT ELEV. A



BASEMENT



PARTIAL LOFT ELEV. B



Materials, specifications and floorplans are subject to change without notice. All house renderings are artist's conceptions. All floorplans are approximate dimensions. Actual useable floor space may vary from the stated floor area. E.A.C.E. 03/96