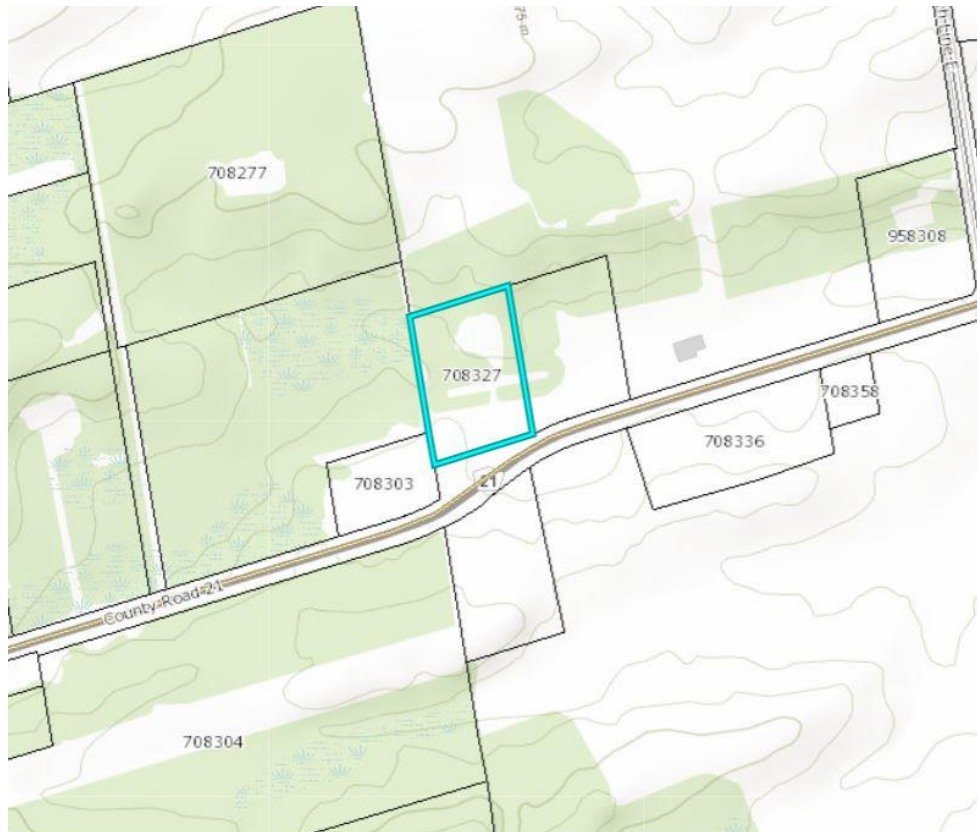




708321 County Road 21, Mulmur



Aerial map presented as per NVCA website and is not to be used as a legal description of the property. It is for information purposes only and may not represent actual or current conditions.

Base Mapping

- ☐ NVCA Jurisdiction
- ☐ Lower Tier Jurisdiction
- ☐ Dufferin County/Grey County Assessment Parcels

Topographic Basemap Features

- Jurisdictional Border
- First Nations Territory
- Trail
- Railway
- Urban Area
- Elevation
- Wooded Area

Water Features

- River, Stream or Creek
- Lake, Pond, River or Stream
- Wetland

Nvca Regulated Areas

- ☒ NVCA Regulated Area

Transportation (Roads)

Transportation (Roads) > 1:15000

- Highway
- Major Road
- Local Road
- Private, Unassumed and Seasonal Road

Transportation (Roads) < 1:15000

- Highway
- Major Road
- Local Road
- Private, Unassumed and Seasonal Road

Building Type

- Building Type

Parcels

- ☐ Assessment Parcel
- ☐ Ownership Parcel

Land Type

- Airport
- Cemetery
- Commercial
- Beach
- Emergency Service
- Education
- Golf Course
- Health Service
- Municipal Park
- Provincial Park
- Industrial
- Military